

Historic, archived document

Do not assume content reflects current scientific knowledge, policies, or practices.

Reserve
Ag 84m B

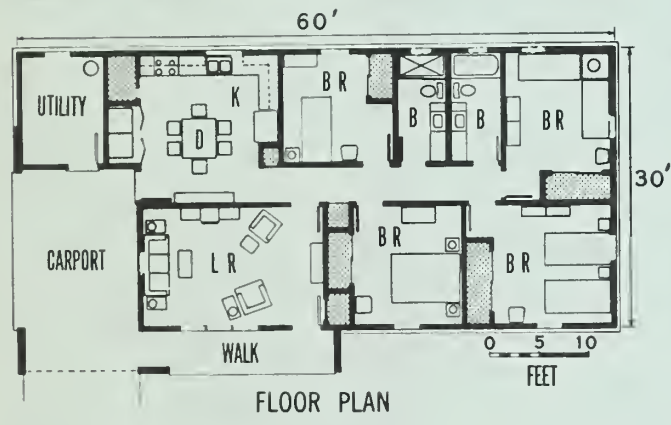
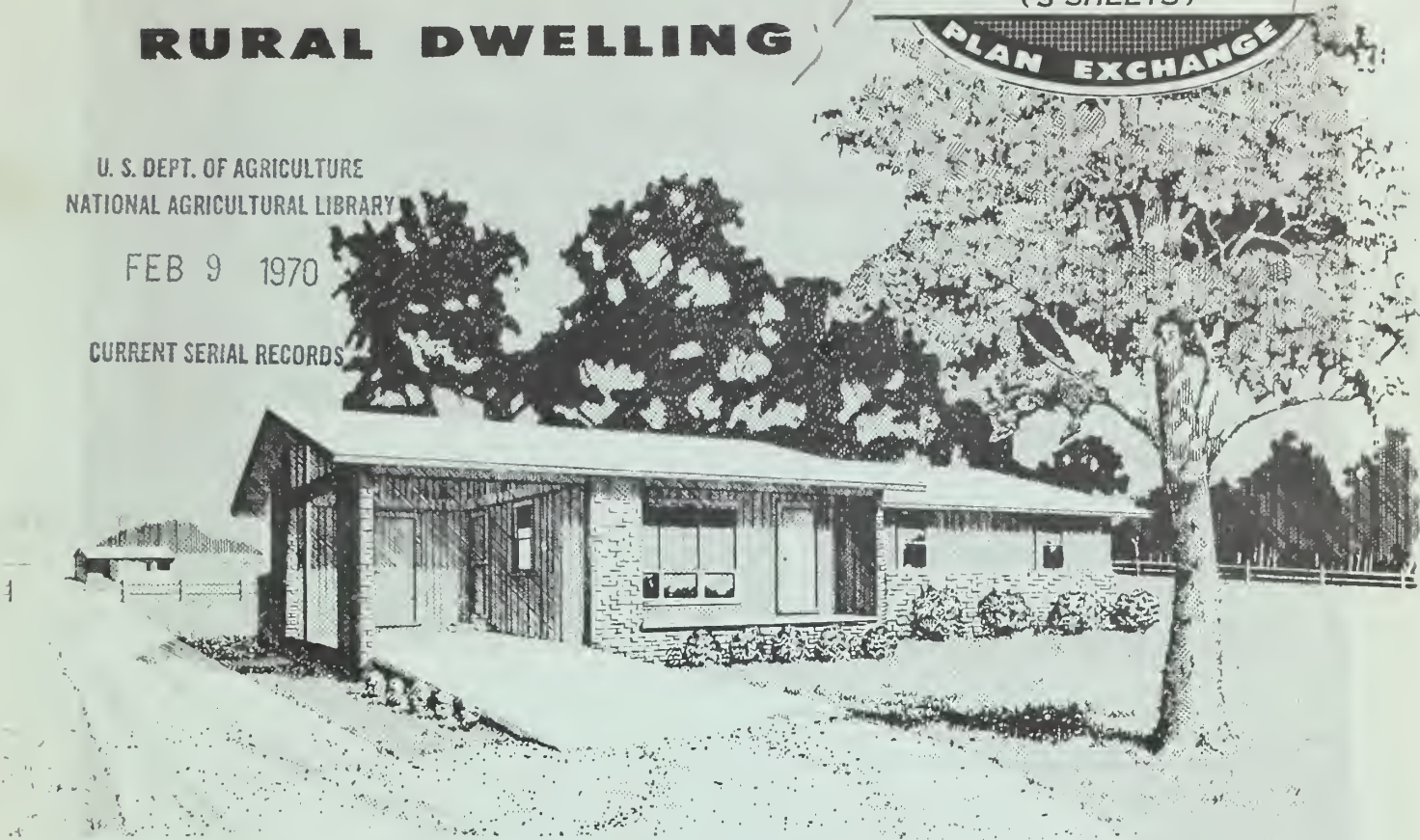
4 - Bedroom RURAL DWELLING



U. S. DEPT. OF AGRICULTURE
NATIONAL AGRICULTURAL LIBRARY

FEB 9 1970

CURRENT SERIAL RECORDS



The bedrooms and baths can be reached from the carport entrance. The four bedrooms, although not large, have spacious closets and are well ventilated; two have cross ventilation.

Locating the two bathrooms back to back should result in a saving in the cost of plumbing piping. The lavatories in both bathrooms are set in long, usable counters. The large utility room is useful for storing lawnmower and garden tools. The washer and dryer could be reversed to open into this area and be walled off from the kitchen, if desired.

If the floor of the carport is placed only 6 inches below the finished floor of the house, steps projecting into the carport can be eliminated.

The kitchen design is L-shaped, with adequate counter space and with drawer and shelf storage space under-

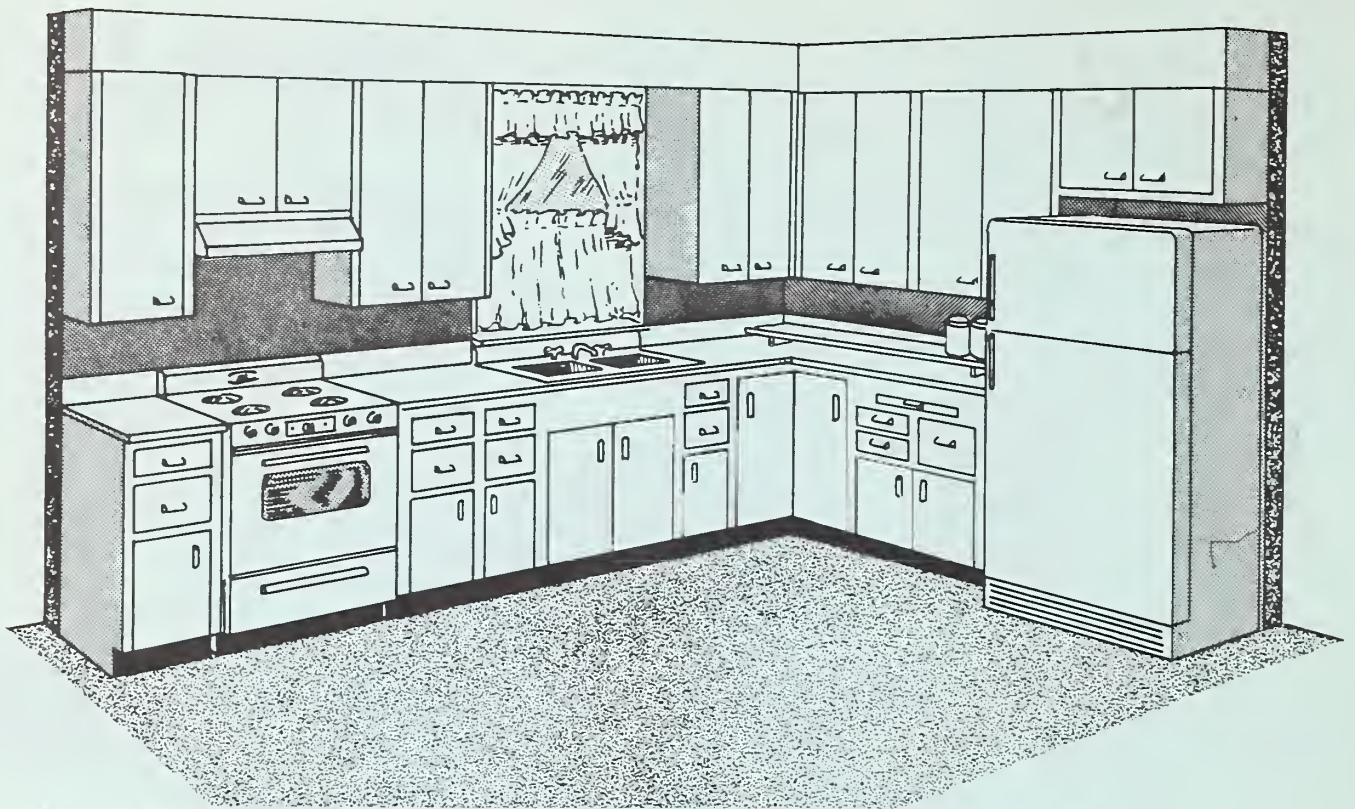
This modern 4-bedroom house, constructed of brick and vertical boarding, was originally designed and built in Arkansas. It has eye appeal and can be constructed at a minimum cost without sacrificing livability.

Washington, D.C.

Issued January 1970

UNITED STATES DEPARTMENT OF AGRICULTURE **Miscellaneous Publication No. 1157**

For sale by the Superintendent of Documents, U.S. Government Printing Office, Washington, D.C. 20402 - Price 5 cents



L-shaped kitchen arrangement

neath the counter. Wall cabinets for dishes and supplies are located over the area where they are convenient. A double sink is shown with one shallow and one deep bowl. The shallow bowl section is useful for many kitchen chores—washing and peeling vegetables and doing dishes.

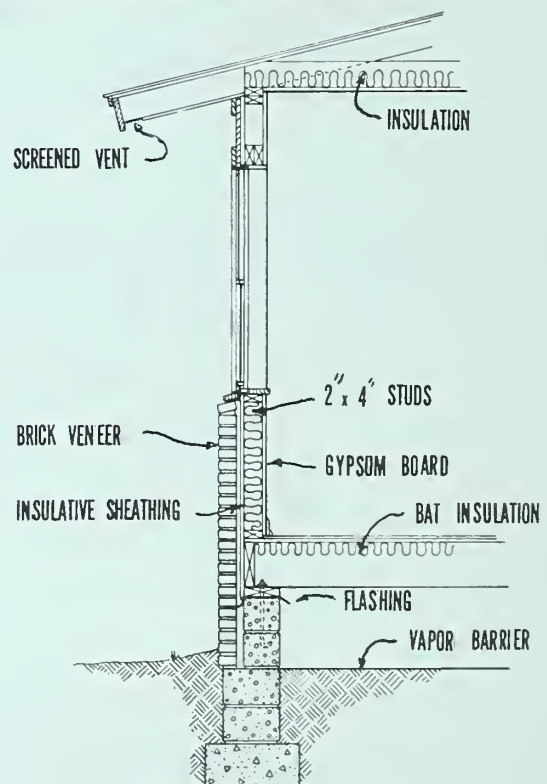
The corner cabinet space under the counter is fully utilized by a lazy susan.

Space for laundry equipment and closets for brooms, laundry supplies, and ironing board are provided for on opposite wall.

Complete working drawings may be obtained from the Extension Agricultural Engineer at your State university. There may be a small charge to cover cost of printing.

If you do not know the location of your State university, send your request to Agricultural Engineer, Federal Extension Service, U.S. Department of Agriculture, Washington, D.C. 20250. He will forward your request to the correct university.

ORDER PLAN NO. 7184, 4-BEDROOM RURAL DWELLING



wall section

Agricultural Engineering Research Division AGRICULTURAL RESEARCH SERVICE

