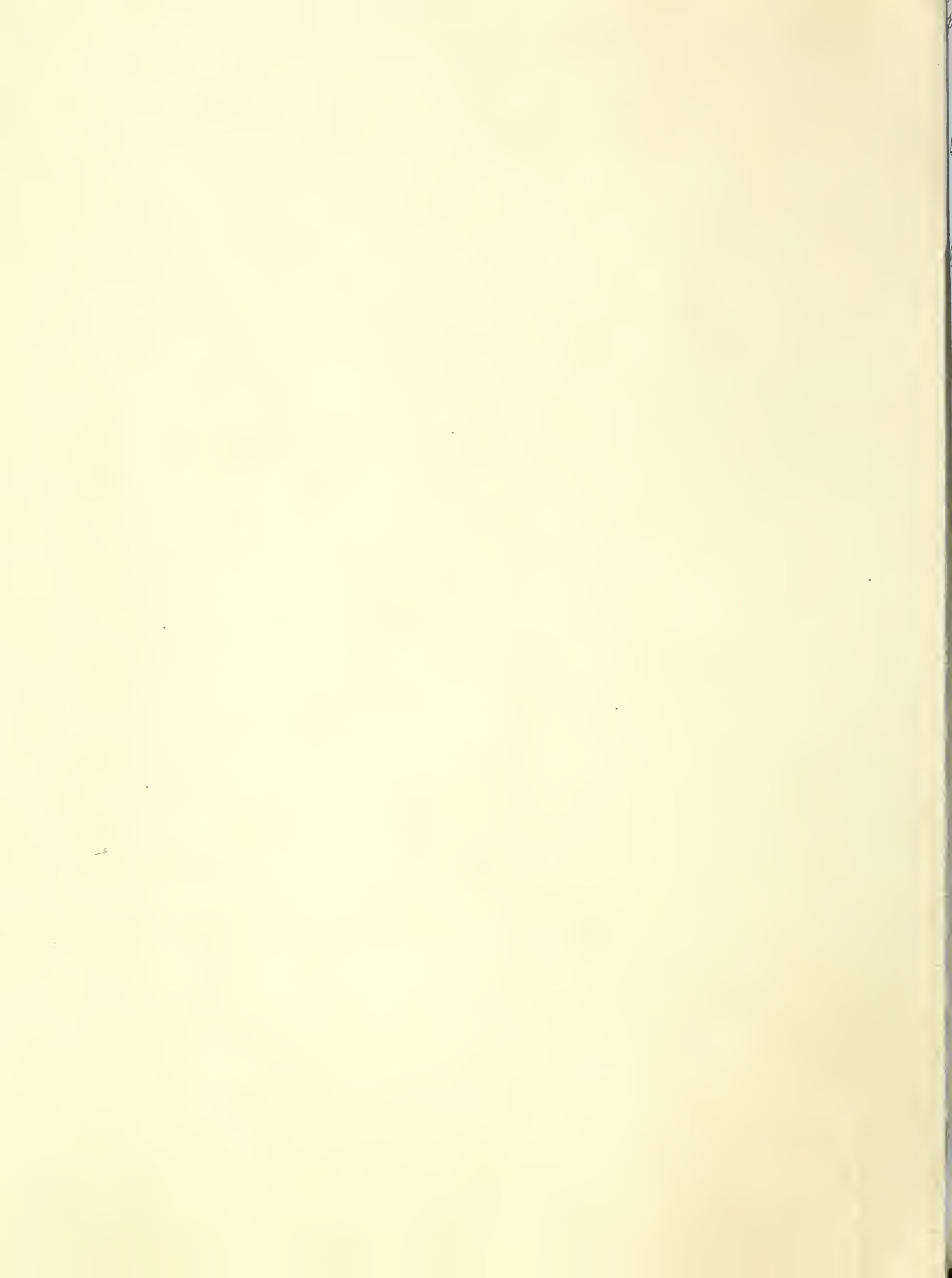
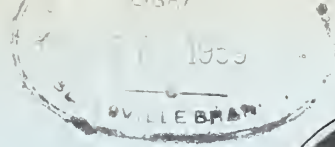


## Historic, archived document

Do not assume content reflects current scientific knowledge, policies, or practices.

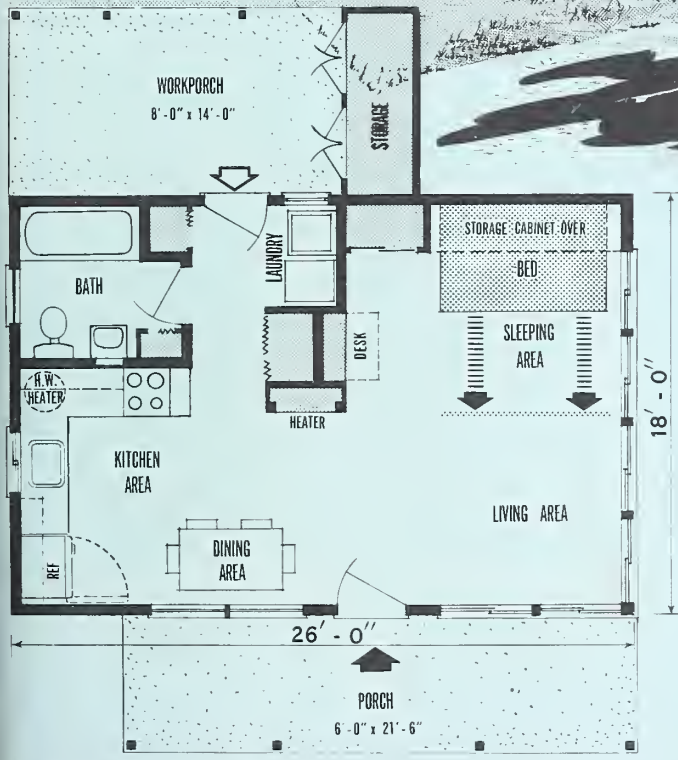
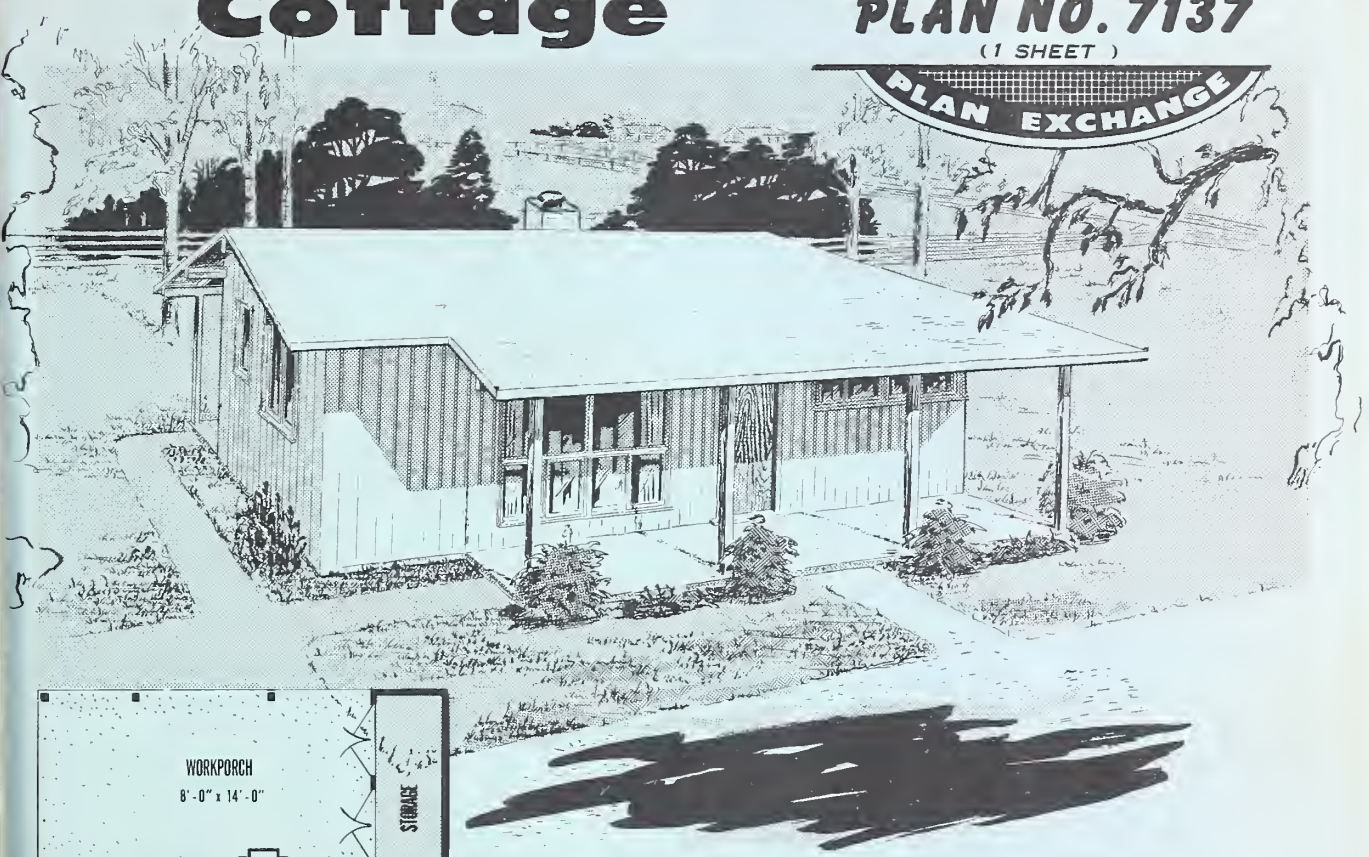


193  
5-1



# Farm Cottage

COOPERATIVE  
FARM BUILDING  
**PLAN NO. 7137**  
(1 SHEET)  
PLAN EXCHANGE



This small frame cottage represents a practical minimum of both space and cost. It is intended primarily for a young couple starting out on a farm. Later, when the farm business is further developed, it can be used as a tenant house.

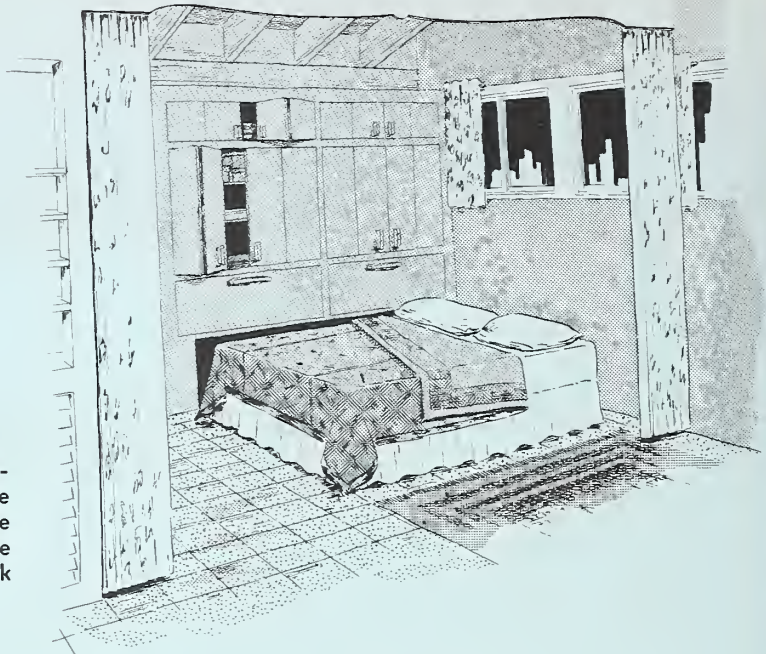
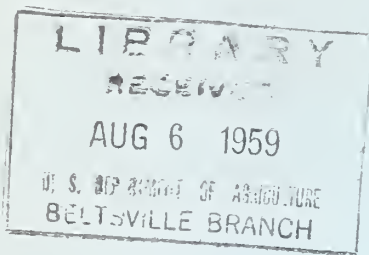
The cottage is also adequate for a retired couple who do not wish to maintain a large house.

Special space-saving features include an under-counter water heater, a pullout bed, a wall desk, a wall-type heater with a prefabricated metal or asbestos-cement chimney, and accordion-type closet doors.

The large porches and generous window areas make the cottage particularly suitable for warm climates.

	Square feet
Living area . . . . .	468
Porch and storage area . . . . .	267

Issued July 1959



## interior

This view shows the sleeping area with the convertible bed in the pulled-out position. The bed becomes a comfortable couch for daytime use when pushed partially under the storage cabinet and provided with cushions for a back rest.

## farmstead layout

Locate the cottage at least 100 feet from the highway and about the same distance from the farm court. Locate it so that prevailing winds do not carry odors and dust from the livestock area.

If a second dwelling is built, it may be located at the left of this arrangement, with a separate driveway from the highway.

Complete working drawings may be obtained through your county agent or from the Extension agricultural engineer at most State agricultural colleges. There is usually a small charge.

**ORDER PLAN NO. 7137, FARM COTTAGE**

If working drawings of this plan are not available in your State, write to the U.S. Department of Agriculture, Agricultural Engineering Research Division, Plant Industry Station, Beltsville, Md. The U.S. Department of Agriculture does not distribute drawings, but will direct you to a State that does distribute them.



AGRICULTURAL ENGINEERING RESEARCH DIVISION  
CLOTHING AND HOUSING RESEARCH DIVISION  
AGRICULTURAL RESEARCH SERVICE

For sale by the Superintendent of Documents, U.S. Government Printing Office, Washington 25, D.C. Price 5 cents.



