

## Historic, archived document

Do not assume content reflects current scientific knowledge, policies, or practices.

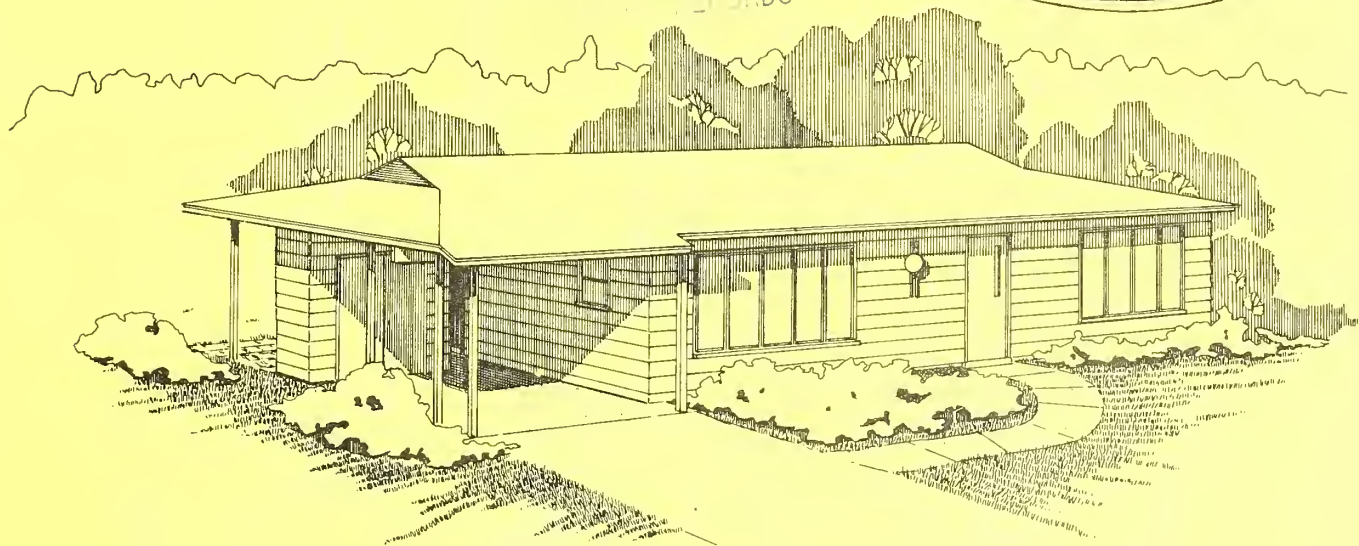


1  
Ag 84M  
Cop. 2

# 1368

AGRICULTURE  
LIBRARY

## TWO - BEDROOM FARMHOUSE

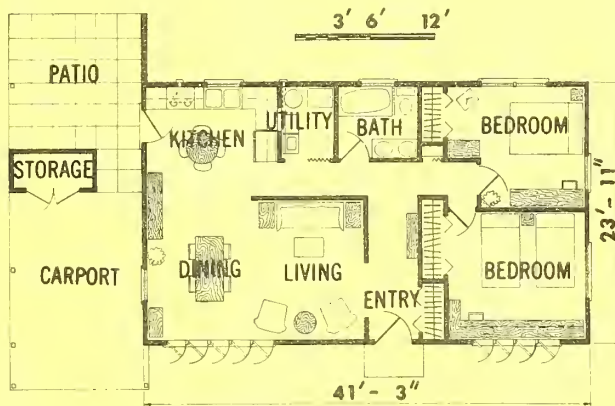


This two-bedroom house is planned primarily for a flat lot. The front faces the street and is intended to be sited with a southern or eastern exposure. The plan is zoned into dining, kitchen, living, and sleeping areas tied together by an excellent interior circulation pattern that controls traffic exceptionally well from both entries.

The L-shaped kitchen with its accessibility to the patio and carport makes it convenient for outdoor living activity and bringing in groceries. Another amenity is the utility room located near the kitchen, creating a step-saving work area.

Construction features include commercially built roof trusses, a simple concrete slab-on-grade floor, and wood stud exterior walls with full batt insulation. All construction complies with residential standards, and the rooms are generously sized.

The storage room at the rear of the carport may be used to store lawn furniture, garden tools, and other miscellaneous items. The partly covered patio may be screened if desired. Other storage facilities include a centrally located linen closet in the bedroom hall and a large coat closet at the front door. The plan has 984 square feet of living space.



Complete working drawings may be obtained from the Extension agricultural engineer at your State land-grant university. There may be a small charge to cover cost of printing.

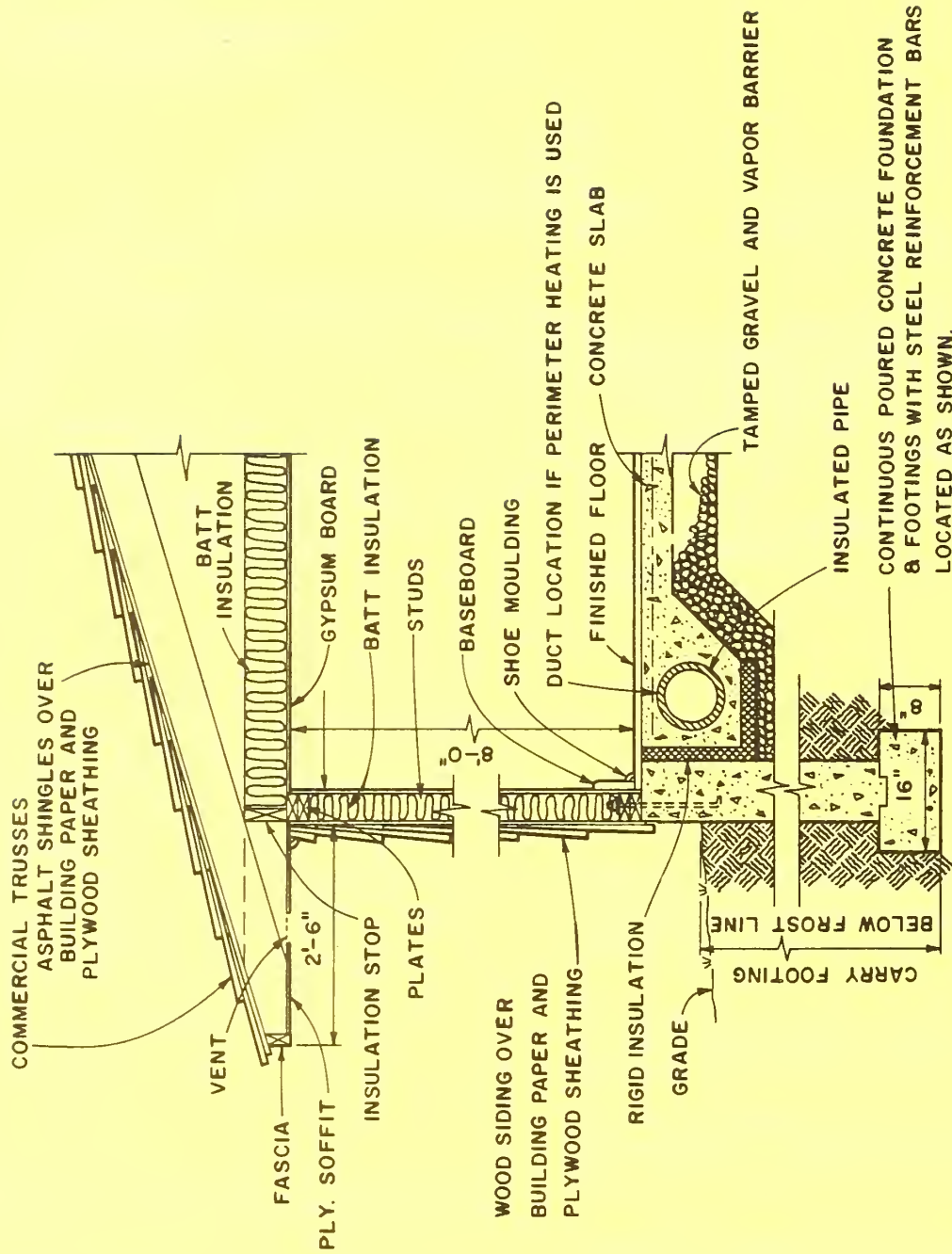
If you do not know the location of your State land-grant university, send your request to Agricultural Engineer, Science and Education Administration, U.S. Department of Agriculture, Washington, D.C. 20250. Your request will be forwarded to the correct university.

ORDER PLAN NO. 7213. TWO-BEDROOM FARM HOUSE

Washington, D.C.

Issued December 1978

U.S. DEPARTMENT OF AGRICULTURE



TYPICAL WALL SECTION





