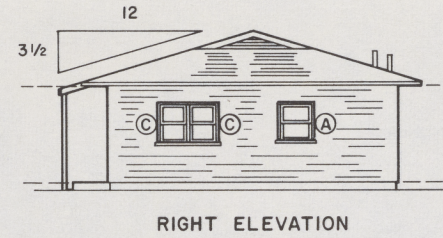
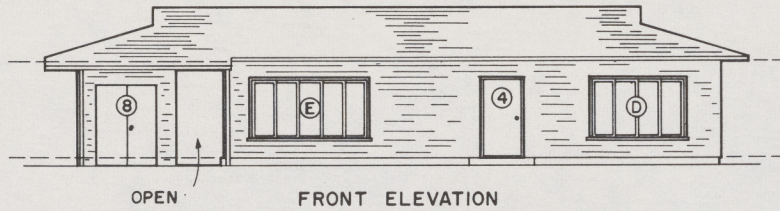
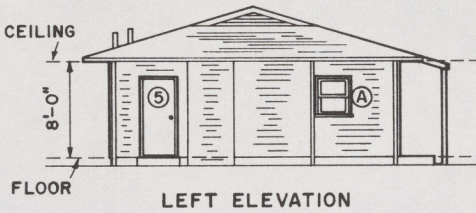
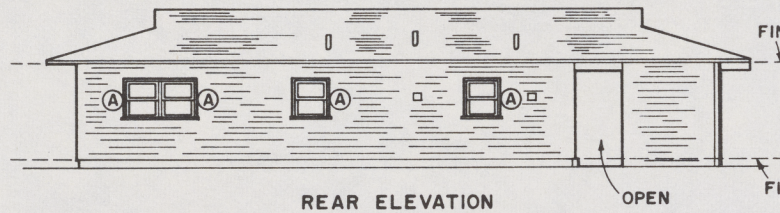


Historic, archived document

Do not assume content reflects current scientific knowledge, policies, or practices

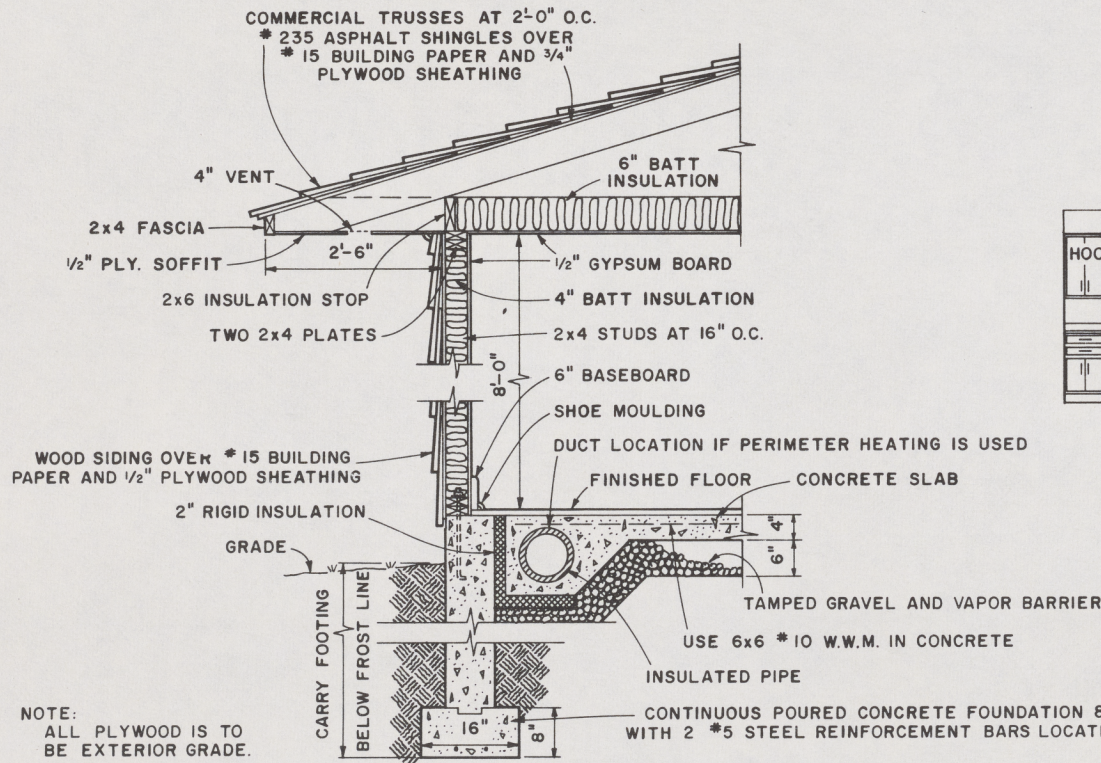


EXTERIOR ELEVATIONS

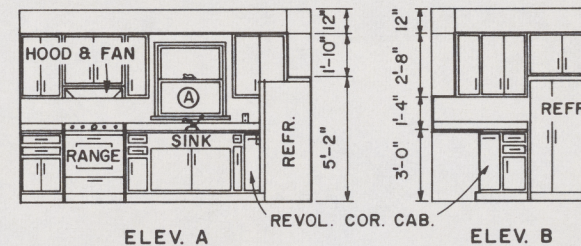
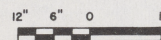


REAR ELEVATION

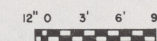
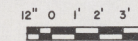
LEFT ELEVATION



TYPICAL WALL SECTION



KITCHEN ELEVATIONS



NOTE:
 ALL PLYWOOD IS TO
 BE EXTERIOR GRADE.

COOPERATIVE EXTENSION WORK IN
 AGRICULTURE AND HOME ECONOMICS

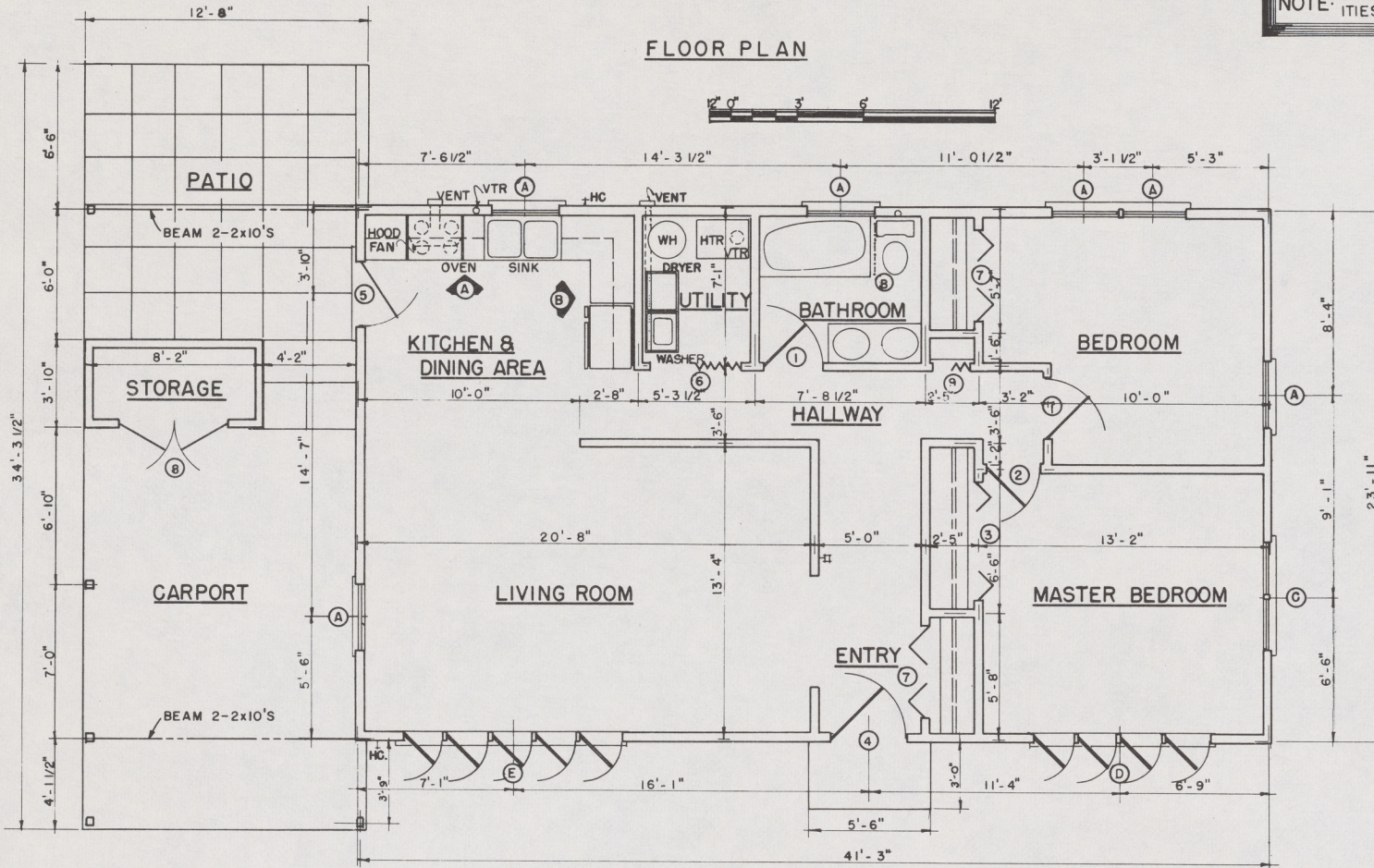
AND
 UNITED STATES DEPARTMENT OF AGRICULTURE COOPERATING

TWO-BEDROOM FARMHOUSE

USDA '76 **7213** SHEET 2 OF 2

NOTE: CONSULT LOCAL BUILDING CODE AUTHORITIES BEFORE STARTING CONSTRUCTION.

FLOOR PLAN



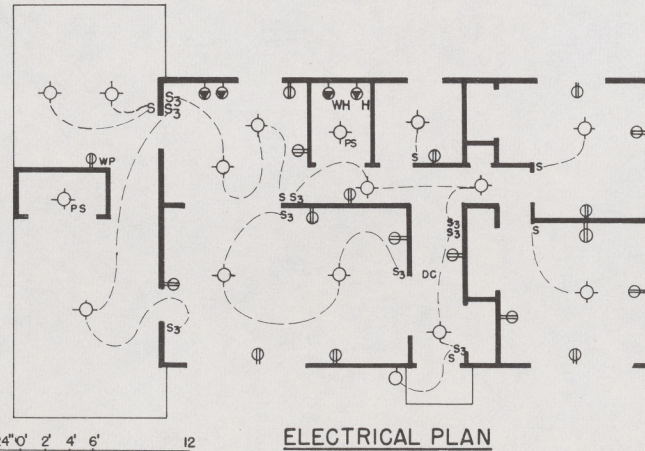
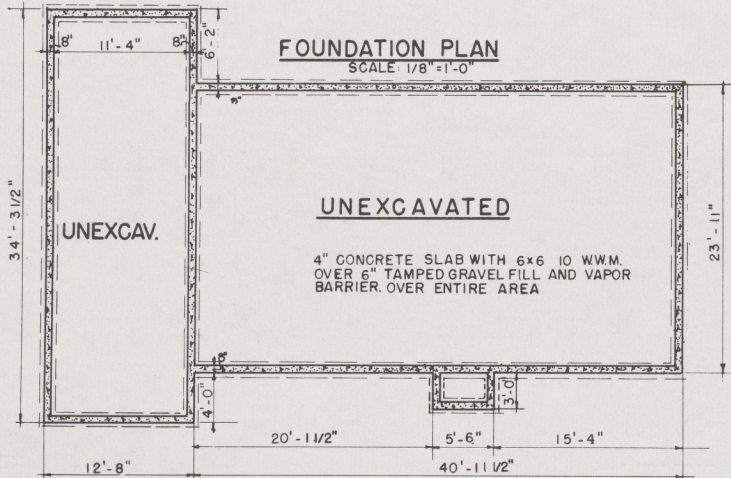
HTR=HEATER
VTR=VENT THRU ROOF
WH=WATER HEATER

LEGEND	
MARK	DESCRIPTION
[Symbol]	FRAME
[Symbol]	WOOD
[Symbol]	CONCRETE
[Symbol]	INSULATION
[Symbol]	GRAVEL
[Symbol]	EARTH
[Symbol]	CEILING OUTLET
[Symbol]	WALL OUTLET
[Symbol]	DUPLEX CONV. OUTLET
[Symbol]	GROUNDING CONV. OUTLET
[Symbol]	SPECIAL PURPOSE
[Symbol]	SINGLE POLE SWITCH
[Symbol]	THREE WAY SWITCH
[Symbol]	HOSE CONNECTION
[Symbol]	WASHER OUTLET
[Symbol]	DRYER OUTLET
[Symbol]	WATER HEATER
[Symbol]	HEATER OUTLET
[Symbol]	OUTLET WITH PULL CHAIN
[Symbol]	DOOR CHIMES
[Symbol]	WATERPROOF CONV. OUTLET

DOOR SCHEDULE			
MARK	DESCRIPTION	SIZE	QTY.
1	HOLLOW CORE-INTERIOR	2'-8"x6'-8"	2
2	HOLLOW CORE-INTERIOR	2'-6"x6'-8"	1
3	WOOD BIFOLD	5'-0"x6'-8"	1
4	SOLID CORE- EXTERIOR	3'-6"x6'-8"	1
5	SOLID CORE- EXTERIOR	3'-0"x6'-8"	1
6	FOLDING PARTITION	4'-0"x6'-8"	1
7	WOOD BIFOLD	4'-0"x6'-8"	2
8	PLYWOOD EXTERIOR	5'-0"x6'-8"	1
9	FOLDING PARTITION	7'-0"x6'-8"	1

WINDOW SCHEDULE			
MARK	DESCRIPTION	SIZE	QTY.
A	DOUBLE HUNG	3'-0"x3'-2"	6
B	PLEXAGLAS PARTITION	2'-6"x6'-8"	1
C	DOUBLE HUNG	2'-4"x3'-4"	2
D	WOOD CASEMENT 4-P	8'-0"x5'-0"	1
E	WOOD CASEMENT 5-P	10'-0"x5'-0"	1

FOUNDATION PLAN
SCALE: 1/8"=1'-0"



ELECTRICAL PLAN

SCALE 1/8"=1'-0" UNLESS OTHERWISE NOTED

COOPERATIVE EXTENSION WORK IN
AGRICULTURE AND HOME ECONOMICS

AND
UNITED STATES DEPARTMENT OF AGRICULTURE COOPERATING

TWO BEDROOM FARMHOUSE

USDA '76 7213 SHEET 1 OF 2